

KB1650 Double Sided Gas Fireplace

Information Sheet for Builders and Architects

MODE

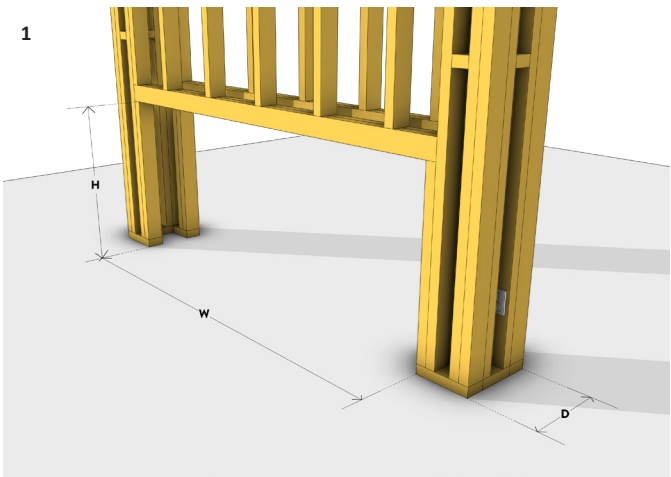
SPECIFICATIONS

Heat Output	9.7kw
Gas Input	44 MJ/hr (NG), 40 MJ/hr (ULPG/Propane)
Gas Connection	Lower rear of fireplace - 1/2" BSPT Female
Gas Type	Natural Gas or Propane/ULPG
Power Requirement	3 pin, 230V AC mains power within 1m
Operation	Thermostatic Bluetooth remote control
Appliance Weight	158kg
Connections	Mid-right side of fireplace
Clearance to Combustibles	Zero clearance from fireplace surfaces
Service Access Hatch	Not Required
Cavity Wall Venting	Not Required
Certification	Complies with AS/NZS 5263.1.3
Flue System	Power direct-vent with 100/75mm flexible and rigid PP flue pipes*

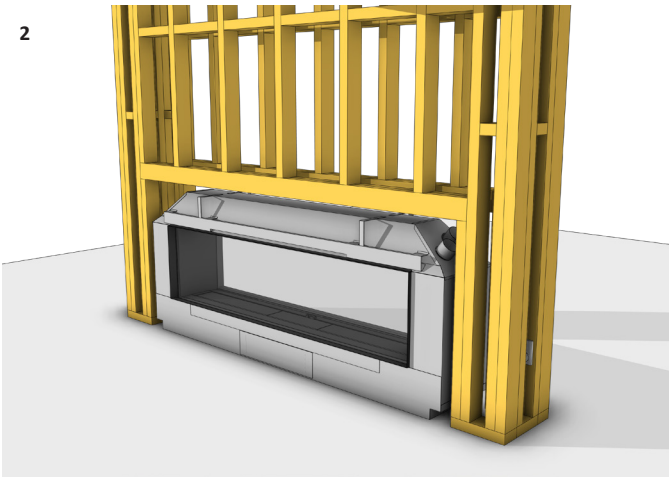


Flue Termination Locations	Roof or wall mounted terminations
Minimum Flue Length	400mm
Max. Uninsulated Flexible Flue Length	8m
Max. Insulated Flexible Flue Length	20m*
Max. Flue Length	40m*
Flue Clearances to Combustibles	50mm for the first 1.2m of flue run
Flue Bends Allowed	Max. 10 bends in any flue run

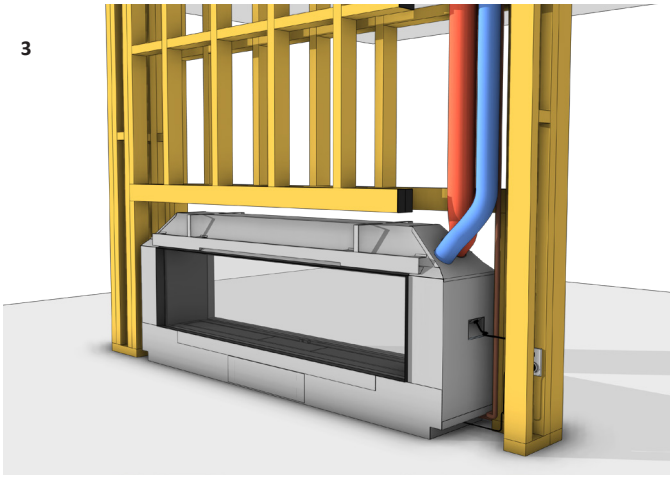
CAVITY INSTALLATION OPTION



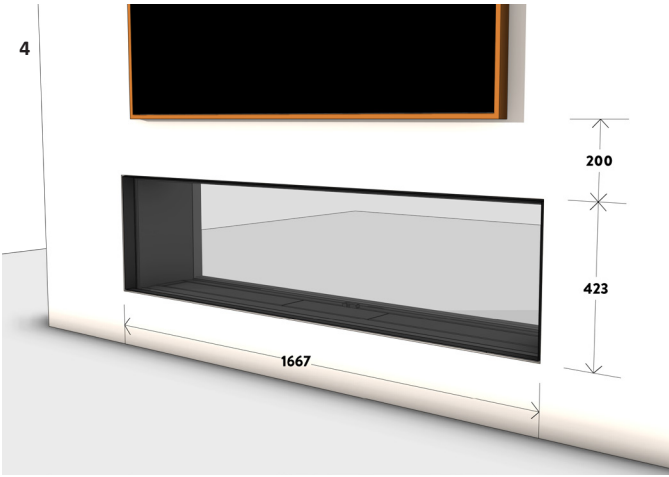
Build the chimney framework with consideration to flue pathways and meet the minimum fireplace opening requirements for a single sided installation (2087mm W x 850mm H x 350mm D). Ensure a continuous base for the fireplace.



Install the appliance into the preformed cavity opening and secure it to the base. Ensure the fireplace is flush with the framework.



Install electrical, network connections, and gas supply. Connect flue pipes to the fireplace and create the flue pathway to the terminal. Connect Powerflue electrical cable at both ends.



Attach wall linings to the framework and fireplace, maintaining a 5mm gap from the fireplace trim. Follow the provided wall lining cutout dimensions above for 10mm wall linings. Complete the project by adding additional finishes or fixtures.

*Refer to the Mode KB1650 Flue Selection Guide

KB1650 Double Sided Gas Fireplace

Information Sheet for Builders and Architects

MODE

CAVITY OPTIONS

The KB1650 gas fireplace is versatile for room installations in different configurations. It fits beneath counters or cabinetry with a capped framework at the minimum cavity height. The cavity can be made from various materials, both combustible and non-combustible, but may not be suitable for existing masonry chimneys. Extra heat protection may be necessary for recessing or joinery specifications.

FIREPLACE BASE

Install the fireplace on a minimum 12mm firm, continuous surface like a concrete floor, plywood, or compressed cement sheet. Avoid installing directly on carpet, rugs, or heat-sensitive floor finishes.

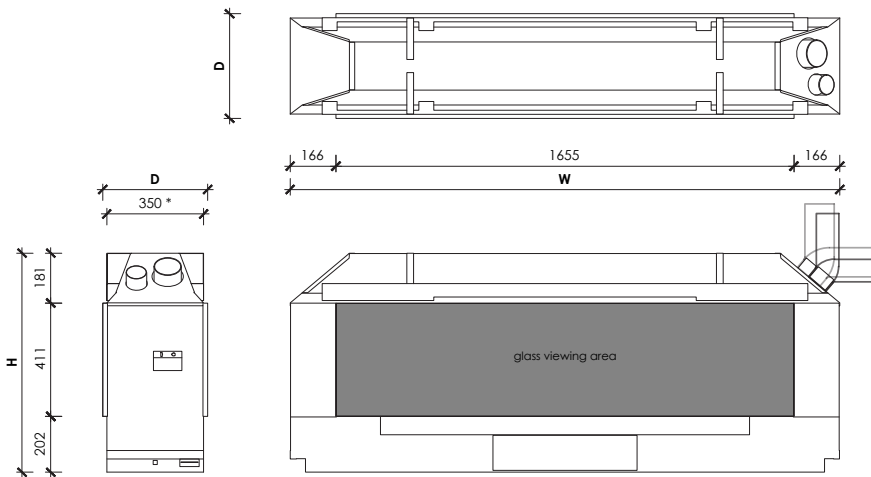
TV CLEARANCE

When mounting a TV or electrical appliance above a fireplace, this can be completed surface-mounted or recessed. Ensure the TV's base is at least **200mm** above the glass viewing area. Note that TV clearance recommendations are suggestions only, and Escea is not responsible for their compatibility with all electrical appliances.

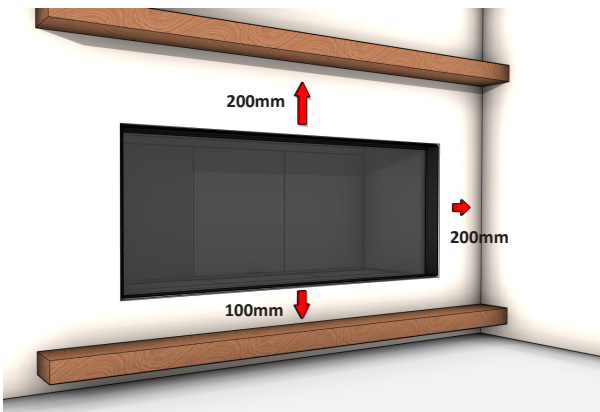
FIREPLACE AND CAVITY DIMENSIONS

Fireplace Width (W)	1987mm
Fireplace Height (H)	794mm
Fireplace Depth (D) including 14mm finishing trim	379mm

Framed Cavity Opening Width min.	2087mm
Framed Cavity Opening Height min.	850mm
Framed Cavity Opening Depth min.	350mm



FIREPLACE CLEARANCES

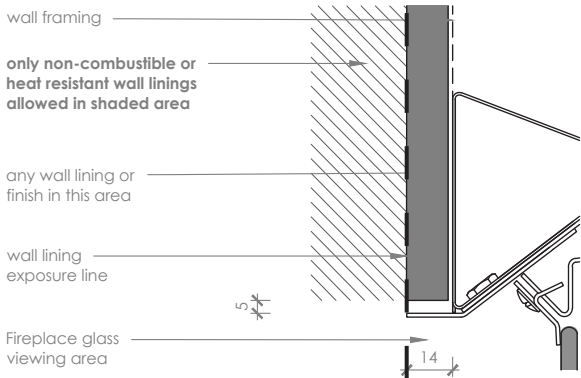


Install in accordance with AS/NZS 5601.1 and KB1650 Install Manual.
For Installation methods not covered in this document please contact:
Email: aa@escea.com PH (NZ): 0800 17 3000 PH (AU): 1800 460 832

Install Manual and CAD files are available via the link:
www.stokefires.com/technical

FINISHES

Use **10mm to 20mm deep wall linings or finishes**, taking care to select materials suitable for the installation. Prevent combustible or heat sensitive wall linings from extending forward or beneath the 14mm fireplace trim. Maintain a 5mm gap (+/- 2mm) to the fireplace's finishing trim. Where required, replace the 14mm fireplace trim with the **22mm or 36mm Extended Trim Kit** or a custom solution, for adequate heat protection. Prolonged heat exposure may damage the appearance or long-term performance of wall linings. For specific finish details, refer to: www.stokefires.com/technical



*This detail is applicable for all sides of the fireplace viewing area.

Ensure all clearances are met to any combustible or heat sensitive materials in front, above, to the side, or below the fireplace viewing area. Following these clearances, will allow the use of standard building materials, whether combustible or non-combustible. It is recommended to keep furnishings at least **1m** from the front of the fireplace.

Ensure that any combustible mantels or protruding ledges above the fireplace are positioned at least **200mm** above the viewing area. Mantel height depends on its depth; the greater the mantel projection, the higher the clearance. A 100mm deep mantel must be at least 200mm above the fireplace opening. For more details, check the Mode KB1650 Install Manual at: www.stokefires.com/technical

A hearth is not necessary, but if used, a combustible hearth must be at least **100mm** below the glass viewing area or made entirely of non-combustible materials.

Where a wall protrudes forward of the fireplace, it must remain a minimum of **200mm** to the side of the fireplace viewing area.

Disclaimer:
Dimensions provided may not consider all site-specific variations or installation needs. Verify dimensions on-site before manufacturing or construction.