

Adhere Serial Label

LE Series MK2

ELECTRIC HOLOGRAPHIC FIREPLACE

Owner Manual

AUSTRALIA AND NEW ZEALAND

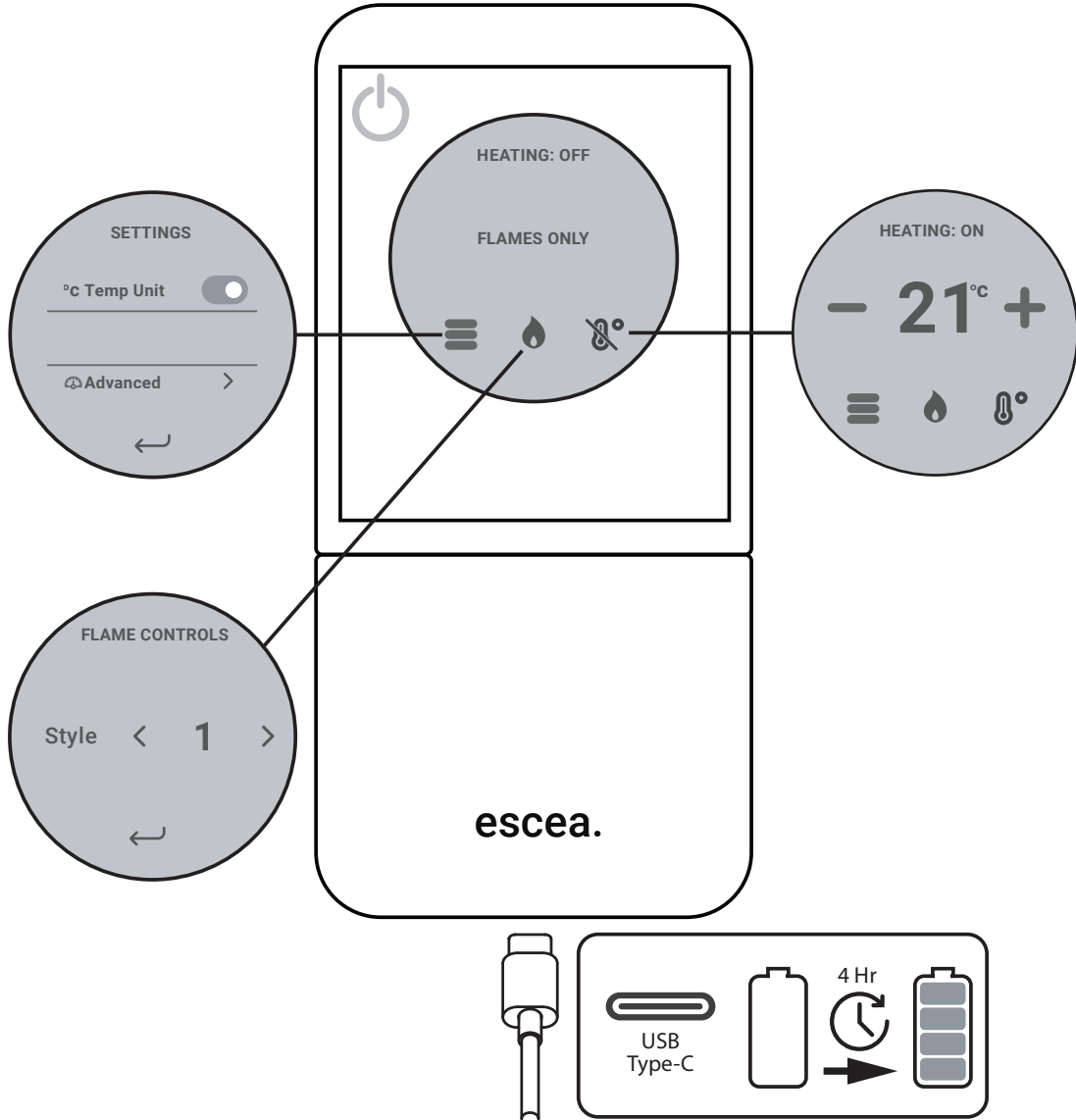
Contents

A OPERATION	3
<hr/>	
B SMART HEAT APP ACCESS	4
<hr/>	
C OWNER MAINTENANCE	5
<hr/>	
C1. Fascia and Trim care	5
C2. Front Glass Cleaning	5
C3. Angled Glass Cleaning	6
C4. Log and Fuel Bed Cleaning	6
<hr/>	
D TROUBLESHOOTING	7
<hr/>	
D1. Troubleshooting	7
D2. Serial Number Location	7
D3. Remote Pairing	7

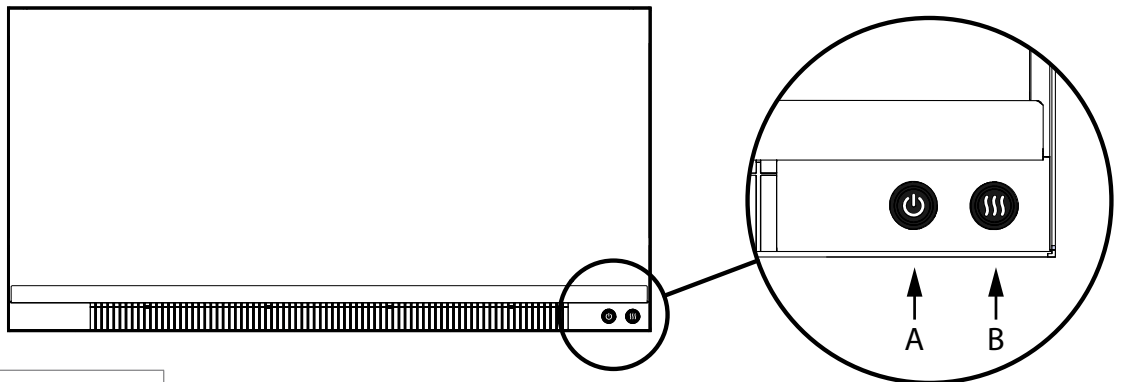
A OPERATION

There are two methods to operate the fireplace, via remote or manual operation buttons. The remote provides full control of the fireplace's features. The manual operation buttons only allow for the fireplace flame to be on or off, or turn the heater on or off.

REMOTE CONTROL



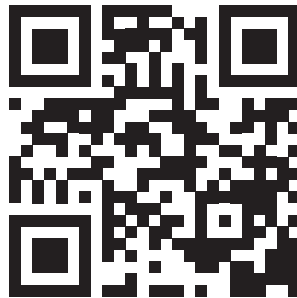
MANUAL CONTROL BUTTONS



Button	Function
A	Standby
B	Heater

B SMART HEAT APP ACCESS

Escea's Smart Heat system enables you to connect each Escea fireplace in your home to your Smartphone. Once your fire is connected to your modem via Wi-Fi, and you have downloaded the Android or iOS App, you will have the ability to control your fireplace's settings and temperature. www.escea.com/smartheat



C OWNER MAINTENANCE

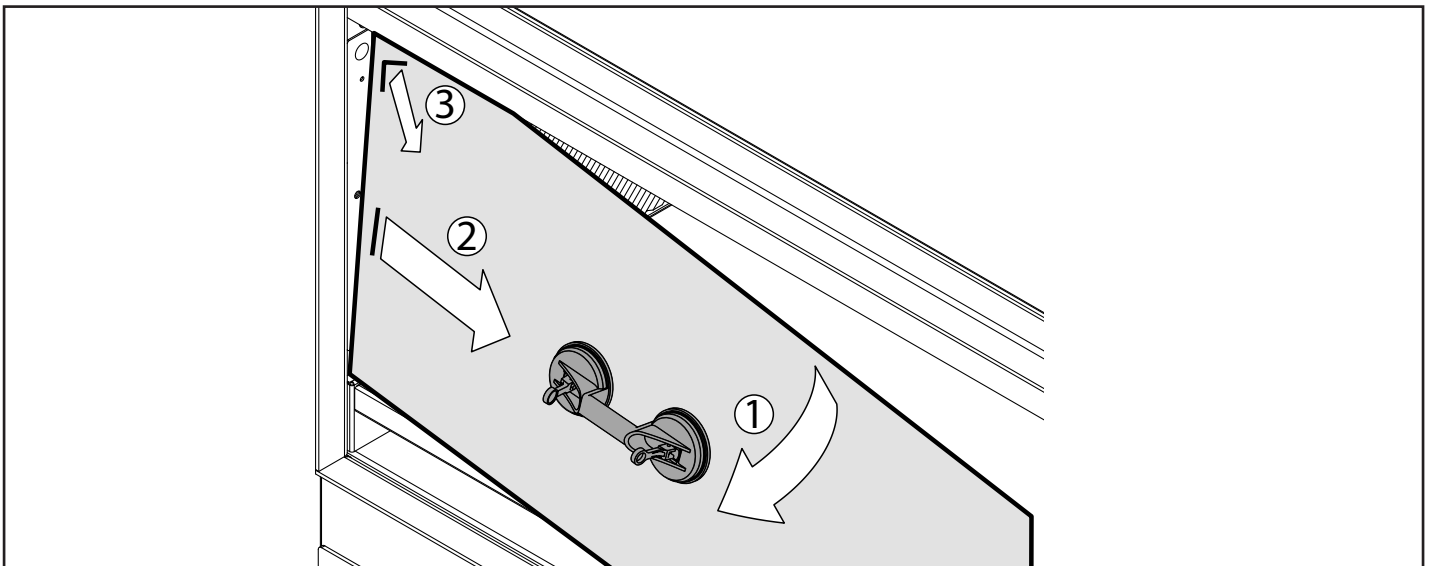
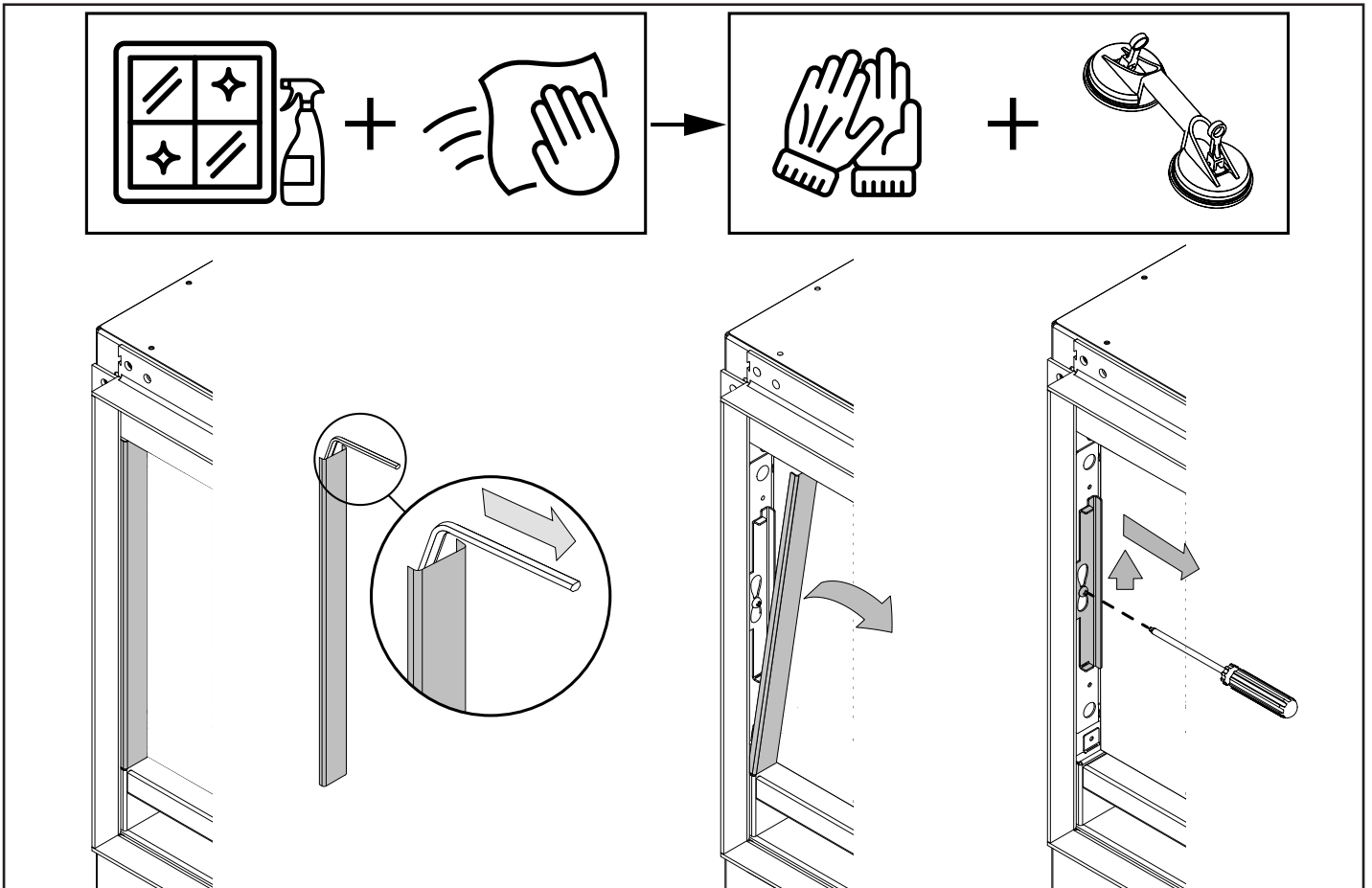
C1. FASCIA AND TRIM CARE

Clean with a damp microfibre cloth.

C2. FRONT GLASS CLEANING

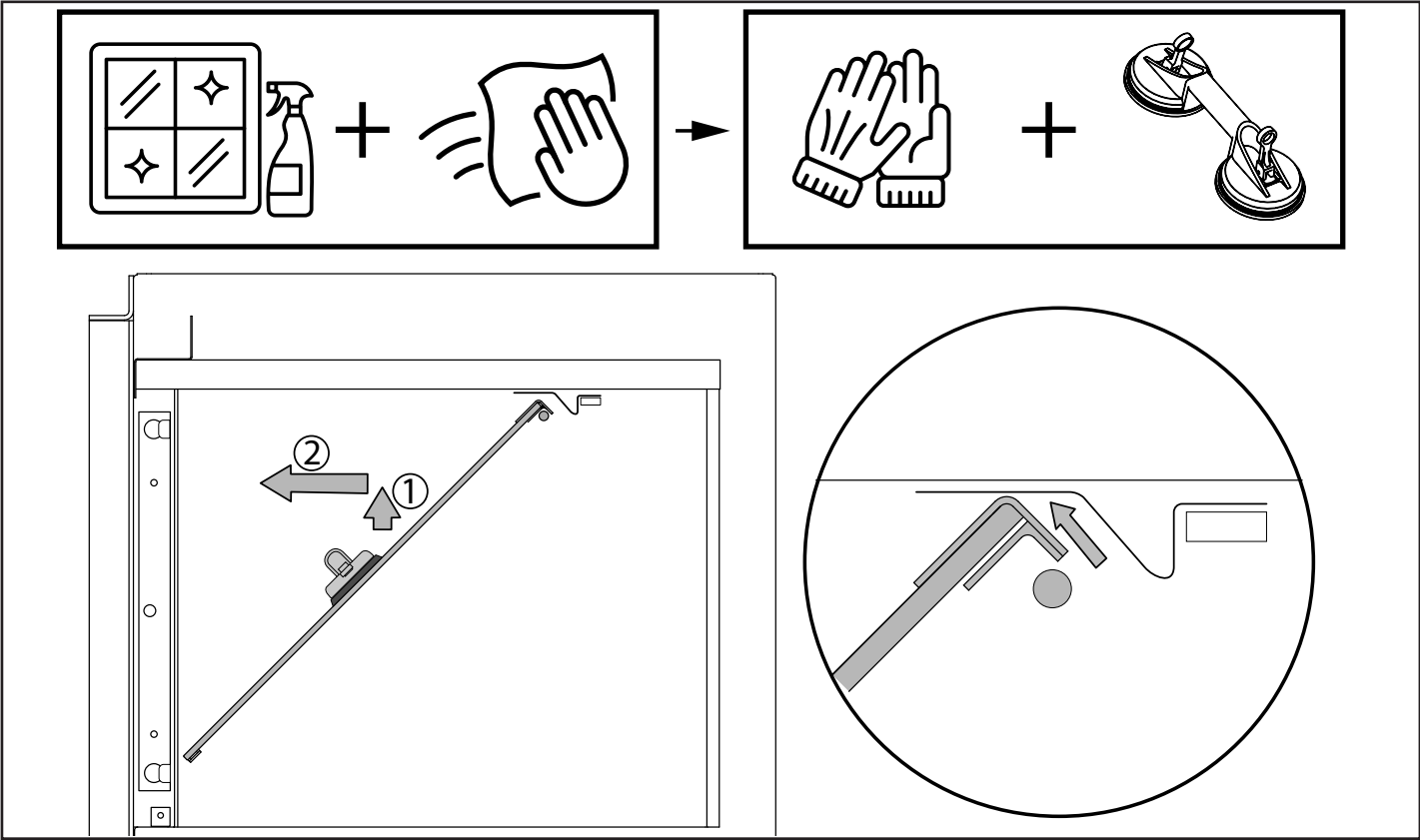
Clean glass with a clean microfibre cloth. Do not use ammonia-based or abrasive cleaners to clean the glass.

Glass can be removed to clean the inside and have access to the angled glass.

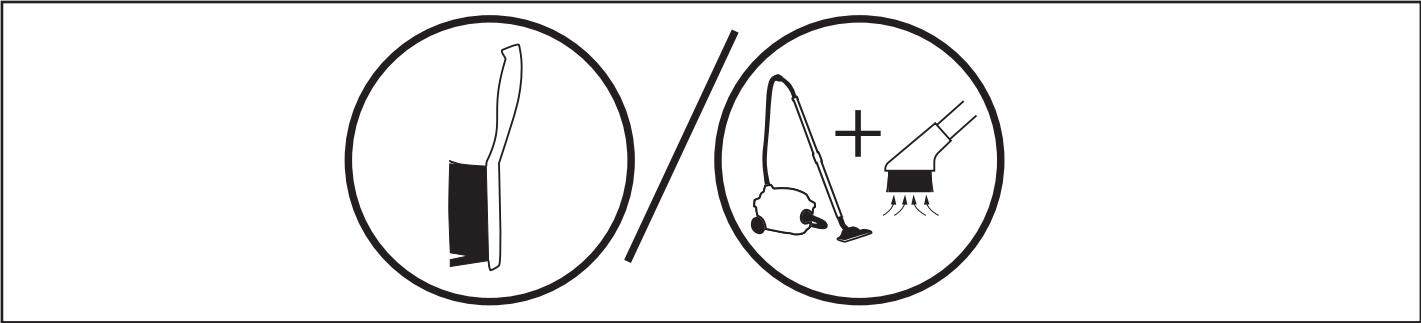


C3. ANGLED GLASS CLEANING

Clean glass with a clean microfibre cloth. Do not use ammonia-based or abrasive cleaners to clean the glass.



C4. LOG AND FUEL BED CLEANING



D TROUBLESHOOTING

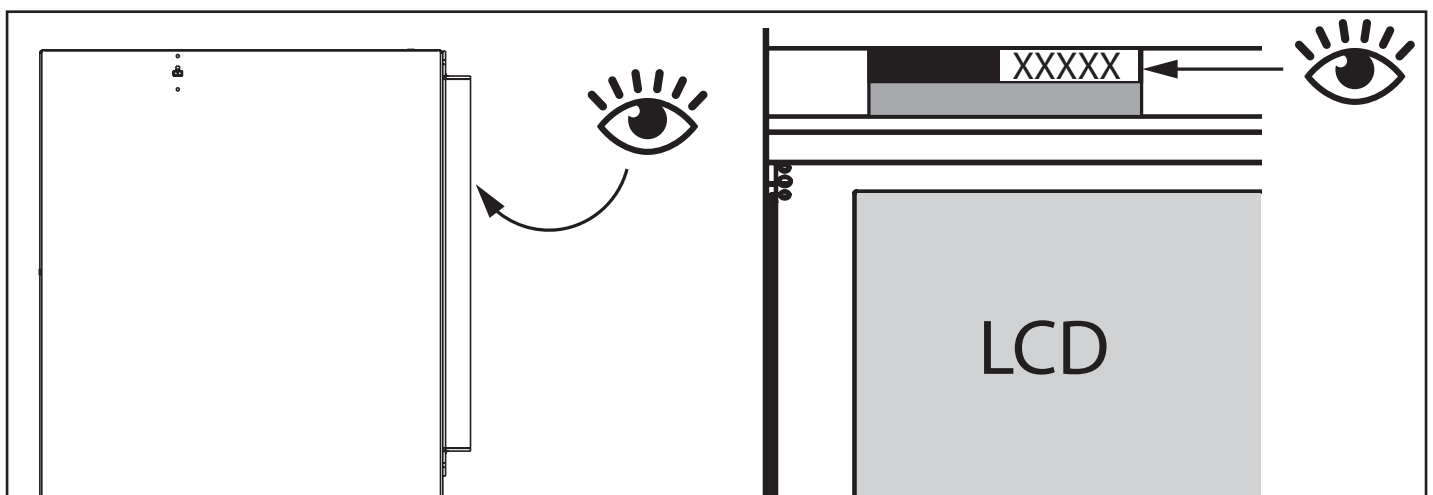
D1. TROUBLESHOOTING

Problem	Possible Cause	Solution
Fireplace will not start and remote cannot contact fireplace.	No power.	Check power to the fireplace.
	Remote is not paired with the fireplace.	Pair remote to the fireplace.
Wrong temperature unit	Possible change on the remote.	Remote: Menu > Temp Unit
Smell from heater element	Dust build-up on the heater	This is normal, no action required. But if it persists, obtain service from a technician.
Remote is unresponsive.	Remote has no power.	Charge via USB-C port and cable.
	Remote is faulty.	Contact escea.com or your retailer.
Flame picture will not appear.	No Power.	Check power to home or switchboard.
	LCD not working	
No Heat from the fireplace	Heater element(s) may be disconnected.	Contact escea.com or your retailer for assistance.
Fan is noisy.	Dust and debris buildup on fan blades.	
	Fan blades touching a loose component.	
	Faulty Fan.	
Ember LEDs not working.	LEDs disconnected or faulty.	
E1, E2 or E3	Error codes may have multiple causes.	

D2. SERIAL NUMBER LOCATION

There are two options to access the fireplace serial number. The data plate can be viewed following the instructions below, or by using the remote.

Using the remote to access your serial number, select: **Menu > Advanced > Information**



D3. REMOTE PAIRING

To pair a new or current remote to your fireplace the Serial Number and Pin are required. To access serial number and pin refer to Sec D2. To pair the remote to the fireplace, select on the remote: **Menu > Advanced > More > Pair Fire**

